

# North Central Bronx Hospital

📍 Bronx, New York , USA



North Central Bronx



## The Results:



### Unmatched Speed

to meet deadlines and keep client's scheduling on track



### Close Work Partnership

every step of the way with architects, contractors, and client



### Reliable Quality

that translates to guaranteed performance, energy savings, and less maintenance

## Project Overview:



### The Challenge:

Provide custom medical grade luminaires for 120 temporary ICU beds within 1 week in the midst of a global pandemic.



### The Process:

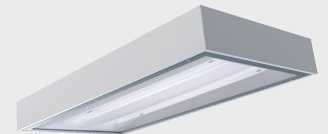
Utilizing our flexible manufacturing expertise and state-of-the-art equipment to produce a medical grade luminaire to meet the customers exact specs for 120 temporary ICU beds.



### Our Solution:

Viscor produced and delivered 103 Certolux MD2-3461 spec-grade luminaires within 1 week of request, assisting this time sensitive plan to triple the ICU bed capacity. This luminaire is designed as a combination Ambient/Exam light for healthcare facilities and is offered in 2' x 2' or 2' x 4' sizes with multiple configurable options.

## Featured Products:



**MD2IG-3461** | QTY: x103pcs

LED Recessed Type G