

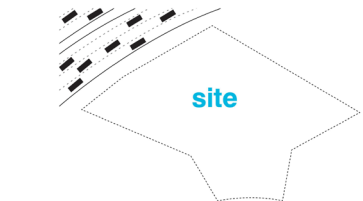
CO ARCHITECTS

2020 ARCHITECTURE *FOR HEALTH*

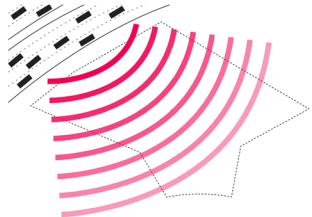
SHOWCASE GALLERY



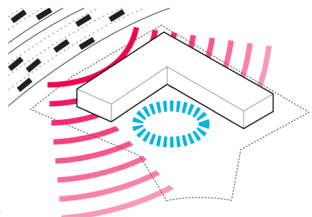




site



noise



protect



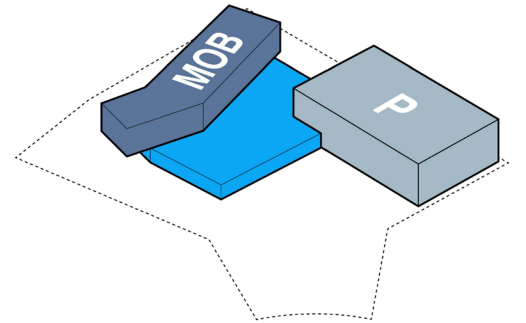




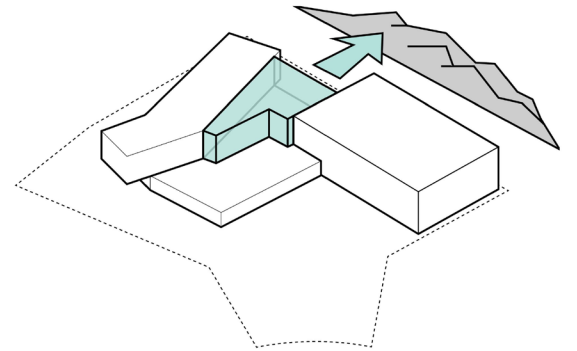


"Being that we provide care to approximately 290,000 members in the San Gabriel Valley, this facility can't come soon enough especially with the projected growth in this area. Adding new services in Irwindale furthers our commitment to offer members in the San Gabriel Valley greater convenience in obtaining access to high-quality health care."

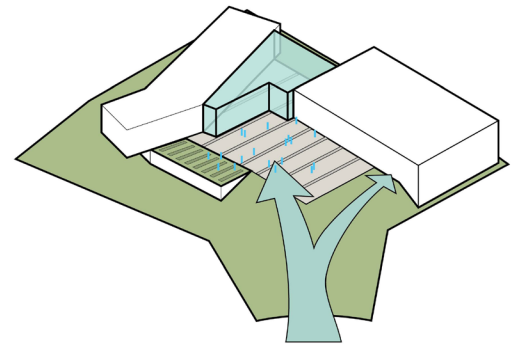
- John Bigley, MD, Area Medical Director, Kaiser Permanente Baldwin Park Medical Center



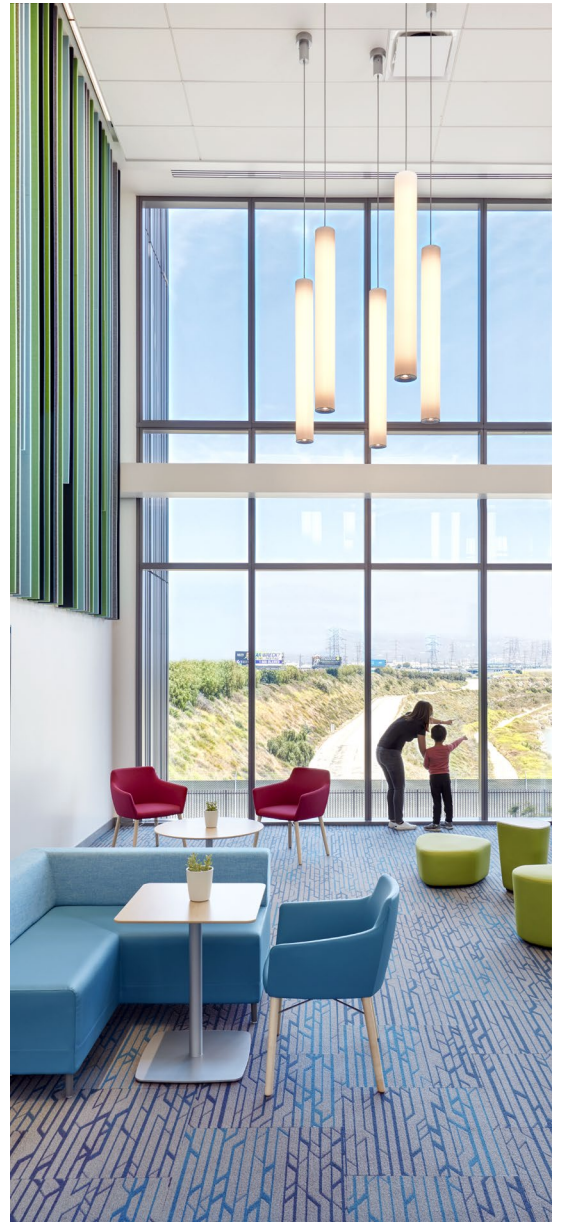
program



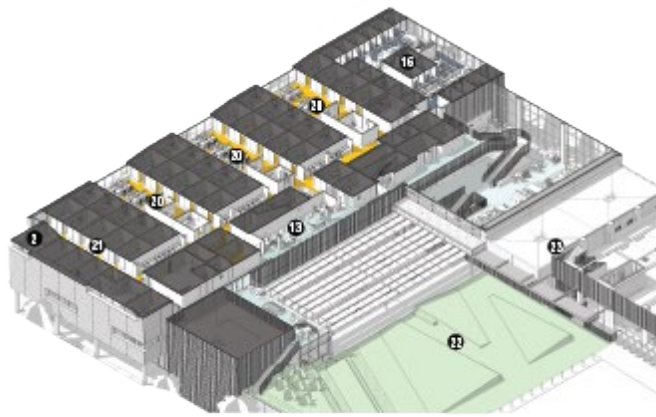
views



plaza



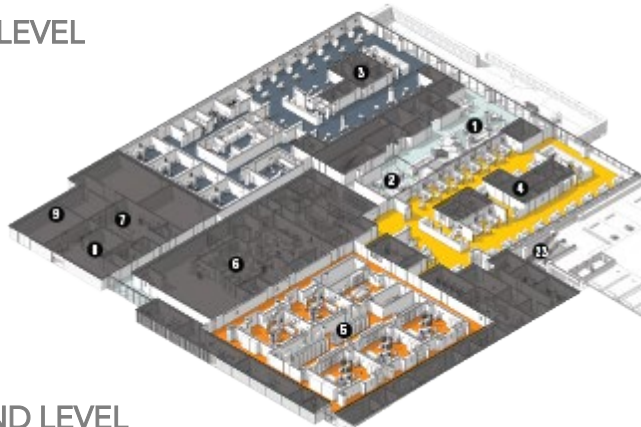




UPPER LEVEL



PLAZA LEVEL



GROUND LEVEL

KAISER PERMANENTE IRWINDALE SPECIALTY MEDICAL OFFICES

The Specialty Medical Offices building is the centerpiece of Kaiser Permanente’s new Irwindale Health Hub. It provides specialty medical services delivered in Kaiser Permanente’s collaborative care concept, Reimagining Ambulatory Care Design (RAD), within the context of a healthcare “community” that includes access to wellness education and retail services. The heart of the complex is the indoor/outdoor Public Square, which draws visitors into a dynamic, yet relaxing atmosphere that encourages them to participate in the health initiatives offered or to linger in quiet educational settings. Specialty clinical services include GI, podiatry, ophthalmology, outpatient surgical specialties and procedure suites, clinical lab and imaging. Efficient space designs and operational workflows, leveraged by IT technologies, promote service and convenience.

- | | | | | |
|----------------------|------------------------------|-----------------------|-----------------------------------|-----------------------------|
| 1. WAITING | 6. STERILE PROCESSING | 11. PUBLIC SQUARE | 16. PROVIDER ENCLAVE | 21. OPHTHALMOLOGY SPECIALTY |
| 2. STAFF LOUNGE | 7. PHARMACY | 12. CONFERENCE CENTER | 17. RAD 25 MODULE (PODIATRY + GI) | 22. PLAZA |
| 3. GI | 8. GENERAL BUILDING SERVICES | 13. FRONT PORCH | 18. SURGICAL SPECIALTY | 23. PARKING STRUCTURE |
| 4. RECOVERY SERVICES | 9. BUILDING SUPPORT | 14. PHARMACY | 19. IMAGING | |
| 5. OPERATING ROOMS | 10. PUBLIC SQUARE - OUTDOOR | 15. BLOOD DRAW | 20. OPHTHALMOLOGY EXAM | |