

« ON OUR RADAR »



POD PEOPLE

The Bath Pod is installed as a monolithic unit and made of modular components built to prescribed specifications. It is constructed of DuPont Corian material that satisfies surface standards for health care and includes walls, a sink and faucet, a grab bar, a door and hardware. A shower option also is available.

Griffom Innovations
541-496-0313
www.griffom.com



SOUND DECISION This pillow speaker allows patients access to cable or satellite TV set-top boxes. It is built on the proprietary EntertainIR platform and has the features of the Excel pillow speaker family. **Crest Healthcare Supply**
800-328-8908 • www.cresthealthcare.com



GREEN AND CLEAN

Purell Green Certified Instant Hand Sanitizer is approved by the EcoLogo label. It is made with 100 percent naturally renewable ethanol in a readily biodegradable formula.

GOJO Industries • 800-321-9647
www.gojo.com/PURELLGreen



SHINY HAPPY FLOORS

The Scotchgard Vinyl Floor Protector delivers glossy, durable floors with less labor. It requires only two coats to produce a clean, shiny floor that is stronger than those using conventional finishes.

3M • 866-654-3679 • www.3M.com

These product descriptions have been condensed from information supplied by manufacturers, representatives and distributors. They are for informational purposes only. Product inclusion should not be construed as an endorsement by Health Facilities Management magazine, Health Forum or the American Hospital Association.

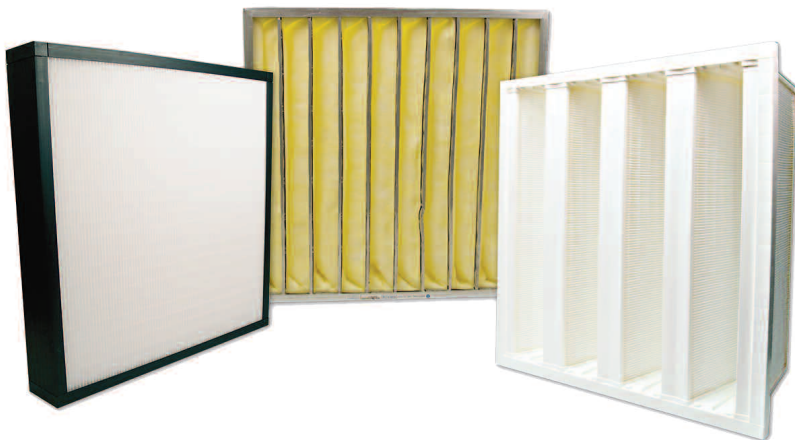


SAND AWAY The Model FSL-401 sand louver is designed to protect air intake and exhaust openings in building exterior walls from wind-driven sand. It incorporates vertical sightproof blades to separate sand from the airstream and channel it out.

Greenheck • 715-359-6171 • www.greenheck.com

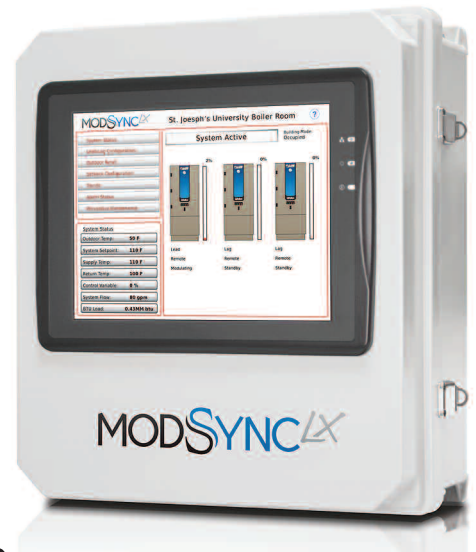


PRESSURE POINT The ACCUSTAT P2DL portable data logger allows users to monitor negative or positive differential air pressure. More than 34,000 time-stamped pressure readings can be stored in its memory. **Biological Controls Inc.** • 800-224-9768 www.biologicalcontrols.com



AIRING IT OUT A new, high-efficiency HVAC filtration media uses bicomponent, nonwoven technology to deliver minimum efficiency reporting values (MERV) of 11 to 15 for excellent indoor air quality. It is ideal for a range of filter types, including pleated/bags, rigid cells, minipleats, v-banks and aluminum separator filters.

Kimberly-Clark Corp. • 888-525-8388 • www.kcfiltration.com



TO A BOIL The ModSync Sequencing System is used as a common interface for multiple condensing boiler systems. It controls the staging and firing rate of each condensing boiler to maximize system efficiencies and provide energy savings.

Fulton • 315-298-5121 • www.fulton.com



EYE IN THE SKY The IK-WB30A Internet protocol (IP) network camera is the manufacturer's highest resolution IP camera to date. It offers electronic pan-tilt-zoom technology that transmits thumbnail images of entire fields of view to allow the camera operator to instantly move to a target region.

Toshiba America Information Systems Inc.
877-696-3822 • www.toshibasecurity.com

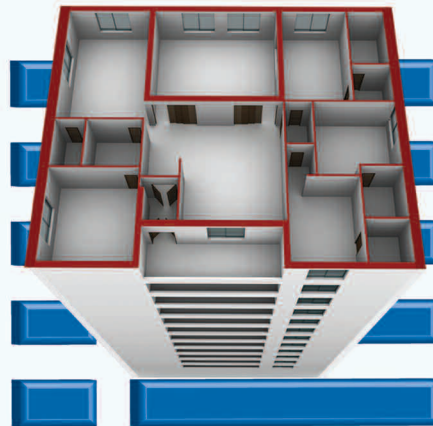


OPEN SESAME

The Harmony Series of access control locking hardware now features iCLASS 13.56 MHz contactless smart card technology. It provides versatile interoperability and offers enhanced security through encryption.

Sargent Manufacturing
800-727-5477
www.sargentlock.com

Success Made Simple.



Visit us at ASHE
Booth #414



TMA provides world-class Maintenance Management Software for healthcare facilities throughout the world.

We meet your organization's maintenance needs by providing a CMMS as either a Client-Hosted or Software as a Service (SaaS) solution.

With the flexibility to start small and add to your software, our scalable product set and optional modules grow with your organization's needs, requirements and demands.

sales@tmasystems.com

800.862.1130

www.tmasystems.com