



**NO HANDS!** The M•Power high-efficiency flush valve promotes water and energy savings and provides sanitary protection by using an infrared sensor beam to activate a flush cycle when a user leaves its range. It features a flow rate of 1.28 gallons per minute (gpm), a 20 percent savings from the industry standard 1.6 gpm.

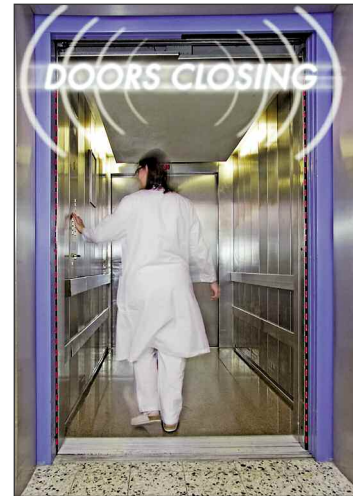
Moen Inc. • 800-289-6636 • [www.moencommercial.com](http://www.moencommercial.com)

**LOOKING UP** Health Zone Ultima from Armstrong offers superior acoustical performance in a washable ceiling panel, making it ideal for health care spaces. Its smooth, soil-resistant, water-repellant surface can also be easily washed with disinfecting cleaners.

Armstrong World Industries  
877-276-7876  
[www.armstrong.com/ceilings](http://www.armstrong.com/ceilings)



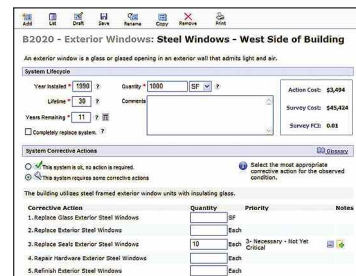
These product descriptions have been condensed from information supplied by manufacturers, representatives and distributors. They are for informational purposes only. Product inclusion should not be construed as an endorsement by Health Facilities Management magazine, Health Forum or the American Hospital Association.



### YOU GO FIRST

Panachrome 3D elevator safety edges use illuminated segments to visually tell passengers when it is safe to enter or leave the elevator. An annunciator is optional.

Janus Elevator Products  
800-527-9156  
[www.januselevator.com](http://www.januselevator.com)



### KNOWLEDGE IS POWER

VFA.auditor version 2.0 is a Web-based facility-centric survey solution that empowers facility managers with a tool that can rapidly collect data about the condition of their facilities and major building systems.

VFA Inc.  
800-693-3132  
[www.vfa.com](http://www.vfa.com)

» ON OUR RADAR «



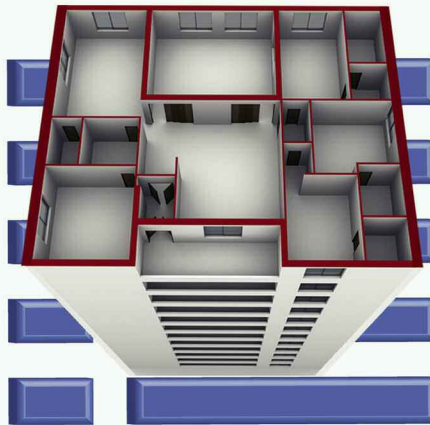
**FLOOR SHOW** The Scotchgard Ultra Durable Floor Finish System can reduce hard floor maintenance costs by up to 50 percent over traditional acrylic floor finishes. The system's hydrophobic protective finish delivers continuous protection and a high-gloss appearance that requires no interim maintenance beyond dusting and damp mopping.  
3M • 866-649-1973 • [www.3M.com/floorfinish](http://www.3M.com/floorfinish)

**LET IT FLOW** The MaxiPlus All-In-One Microfiber Waxing System makes applying any viscosity of floor finish quick and easy. It reduces labor cost by as much as 50 percent and finish usage by as much as 25 percent.

NCP Commercial • 800-252-7666  
[www.ocadoarcommercial.com](http://www.ocadoarcommercial.com)



## Success Made Simple.



TMA provides world-class Maintenance Management Software for healthcare facilities throughout the world.

We meet your organization's maintenance needs by providing a CMMS as either a Client-Hosted or Software as a Service (SaaS) solution.

With the flexibility to start small and add to your software, our scalable product set and optional modules grow with your organization's needs, requirements and demands.

[sales@tmasystems.com](mailto:sales@tmasystems.com)

800.862.1130

[www.tmasystems.com](http://www.tmasystems.com)



**AS SIMPLE AS THAT**

The WetTask System makes disinfecting surfaces simple and reliable. Staff can simply add the premixed solution to a closed container or bucket that dispenses wipers one at a time.

Kimberly-Clark  
Professional  
888-346-4652  
www.kimtech.com



**TWO-TIMER** The Two Stream Glutton Recycling Station combines trusted Glutton and Slim Jim strength and durability into a fully integrated station that provides sortation and containment for up to two waste streams.

Rubbermaid Commercial Products  
800-347-9800  
www.rcpworksmarter.com

**Add  
PROFITS  
to your  
BOTTOM  
LINE**



**Add a SUBWAY® franchise to your facility**

Find out what hundreds of hospitals and medical facilities across the country already know . . .

Contact Joanne Kilgore 800.888.4848 x 1729 kilgore\_j@subway.com  
www.subway.com

SUBWAY® is a registered trademark of Doctor's Associates Inc. ©2010 Doctor's Associates Inc.

### IT'S A WASH New system improves laundry unit production

**W**hen Greg Lorenz, manager of Central Dakota Hospital Laundry Inc. (CDHL), Bismarck, N.D., received financing and board approval to replace his existing tunnel washer with a newer and

larger system, he looked to Minnesota Chemical Co., St. Paul, Minn. A distributor for Pellerin Milnor Corp., Kenner, La., Minnesota Chemical had the advantage of a previous, successful relationship with CDHL, having sold CDHL its original Pellerin Milnor seven-module tunnel system, which effectively processed 3.2 million pounds per year of health care goods from two local hospitals over 17 years.

After factoring in production goals and the linen demands of both hospitals served by CDHL, Lorenz chose to replace the "mint condition" tunnel with an eight-module, 110-pound capacity 76028 CBW® tunnel washer, a single-stage press and three 64058 pass-through dryers with 200- to 320-pound capacity. The laundry relies on

a Milnor CONWA weighing conveyor to weigh the goods and introduce goods into the Milnor CBW washer when the system calls for the next load.

In addition to excellent equipment, another vital component of an efficient laundry is proper machinery layout and installation, which allows the tunnel system to perform to its full potential. Consequently, Minnesota Chemical and CDHL worked with Milnor's application engineering department to design the conveyor system and the tunnel system layout.

Once the machinery locations were confirmed, the real challenge began—getting the old system out and installing the new one in under seven days. Throughout the week-long installation (the average tunnel installation takes 14 days), Gary Halloran, Milnor's field and service engineer, worked with four Minnesota Chemical Co. service technicians who came in from both the Iowa and Minnesota branches to meet the strict deadline.

At the same time, Lorenz and his staff worked overtime to process the incoming linen in their three Milnor Q-Series washer-extractors originally installed with the system in 1992. To prepare for the installation, Lorenz arranged to have the installation performed at the time of lowest linen usage of the year. He also met with hospital staffs to encourage them to conserve as much linen as possible,

and he built up the linen par level at the two hospitals.

With teamwork and a plan, Halloran made his deadline with hours to spare. After a few test loads, the new tunnel system's wash quality was approved.

With this new and improved system, the laundry has seen excellent results in utility savings, process times and overall processed linen poundage. In fact, the laundry had to slow the tunnel washer to keep up with the pre-



**FACILITY NAME**  
Central Dakota  
Laundry Inc.

**LOCATION**  
Bismarck, N.D.

**PRODUCT**  
Eight-module  
CBW® tunnel  
washer system



Laundry carts are positioned to catch dry linen expelled from three pass-through dryers.



Dirty linen is loaded onto the weighing conveyor where it is transported to the washer.

sort area. And, since it has switched from a two-stage press to the 50-bar, single-stage press, it takes four to five minutes less per dryer to dry each load. Moreover, the entire laundry's output per hour has increased 8.5 percent since the new tunnel was installed.

The modernized, automated wash-to-dry process and automated flatwork processing ensures overall efficiency and promotes excellent patient care. **HFM**

Pellerin Milnor Corp. • [www.milnor.com](http://www.milnor.com) • 504-467-9591