

REST AND RELAXATION

The LaResta daybed provides guest seating during the day and sleepover accommodations at night. Personal items and bedding can be discreetly tucked away in elegantly paneled drawers or side storage.

KI • 800-424-2432
www.kihealthcare.com



BRIGHT AND GREEN Green Series Medical Exam Lights feature energy-efficient light-emitting diodes (LEDs). The lights produce bright, white light with a color temperature of 5,500 degrees Kelvin and do not require bulb replacement. They provide true tissue color rendition and no dark or hot spots.

Welch Allyn Inc. • 800-535-6663
www.welchallyn.com



KEEP IT CLEAN The HandGiene ensures hand cleaning with a proprietary soap formulation that takes 15 seconds of friction to dissipate. Staff wear name tags or wristbands that are read by the radio-frequency identification-enabled system upon entering and leaving an area, and while at the dispenser.

HandGiene Corp.
800-948-7304
www.handgienecorp.com



QUITE COMPACT The Kompakt Mobile Storage System allows organizations to reduce their floor space requirements in half or to double their existing floor storage capacity. It is available in electric, mechanical-assist or manual models.

KardexRemstar Inc. • 800-639-5805
www.kardexremstar.com

» ON OUR RADAR «



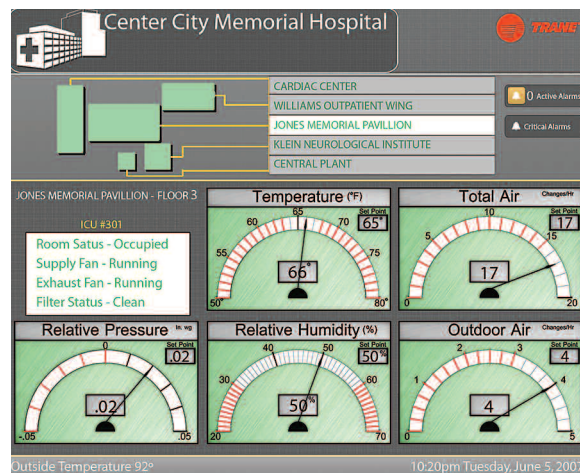
KEEPING IT COOL The DryCool ERV offers energy recovery and dehumidification in one small packaged unit. It provides for the dehumidification requirement of the entire building and cools or heats the airstream to the desired space temperature. Units range from 1,000 to 16,000 cubic feet per minute.

Munters Corp. • 800-843-5360 • www.munters.us



DATA SET The Liebert Challenger 3000 cooling system provides environmental control, including cooling, reheat, dehumidification, humidification and filtration for data centers. Its compact footprint makes it ideal for facilities where space is tight.

Emerson Network Power
314-553-2000
www.emerson.com



DRIVING TOWARD EFFICIENCY The Critical Hospital Systems Dashboard turns a building's automation system into a powerful tool specifically designed for reporting and tracking the needs of health care facilities.

Trane • 615-870-4548 • www.trane.com

SOMETHING IN THE AIR

The CO200 checks for carbon dioxide (CO₂) concentrations. It features a maintenance-free, nondispersive infrared CO₂ sensor and a user-programmable audible alarm.

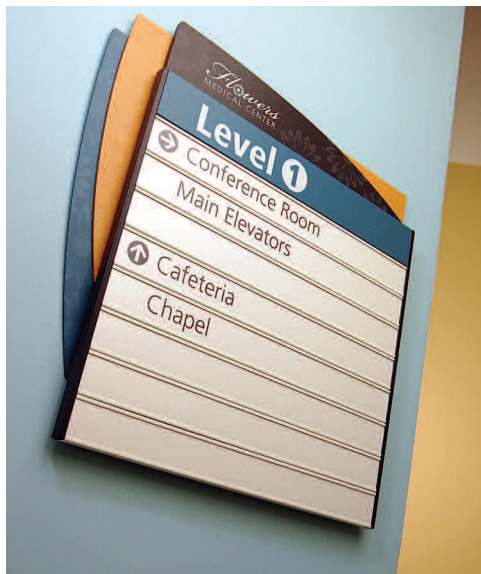
Extech Instruments
781-890-7440
www.extech.com





PAYS TO ADVERTISE The Vukunet Web platform helps digital signage network owners generate incremental income by making it easier to connect all screens that currently have time and space available on their networks to advertise. There is no charge to become a member of Vukunet.

NEC Display Solutions of America Inc. • 866-632-6673 • www.necdisplay.com



SHAPES OF THINGS The Accord 15 Sign System integrates an ever-expanding line of custom shapes and materials. This makes it easy for health facilities professionals to quickly achieve the benefits of a modular system with the unique designs of a custom product.

APCO Signs
877-988-2726
www.apcosigns.com



SIGNS OF SUSTAINABILITY The Eco-Tac+ product line uses a photopolymer material that is processed with light and water and is bonded to nontoxic panels that have up to 40 percent recycled content. It uses low-to-no volatile organic compound paints and is attached with fasteners instead of glues.

Poblocki Sign Co. • 888-678-9995
www.poblocki.com



FINDING YOUR WAY My Patient Passport Express Wayfinding Kiosk has been custom designed for the health care industry. It is a turnkey solution that includes wayfinding software and customizable hardware.

D2 Sales LLC • 262-242-6100
www.d2sales.com